

Tsuru no Sugamo Fi

reshing

Sim. H^1

Low B, open D

norm $\text{F}^{\#}$ (avg + inot) $\text{F}^{\#}$ (lift G)

Low B, open D

lip \downarrow + $\text{C}^{\#}$ $\text{F}^{\#}$

Low C \rightarrow slide to $\text{C}^{\#}$

trill F lip up

(thin fingering)

$\text{G} + \text{T}_1, \text{T}_2$

FLZ

FLZ

(var thin)

$\text{G} + \text{T}_1, \text{T}_2 - \text{C}^{\#}$ + $\text{F}^{\#}$

$\text{C}^{\#}$ + $\text{C}^{\#}$

$\text{G} + \text{T}_1, \text{T}_2$

3:10 MP $\text{F}^{\#}$ (foot pedal)

$\text{G} + \text{T}_1, \text{T}_2 + \text{G}^{\#}$

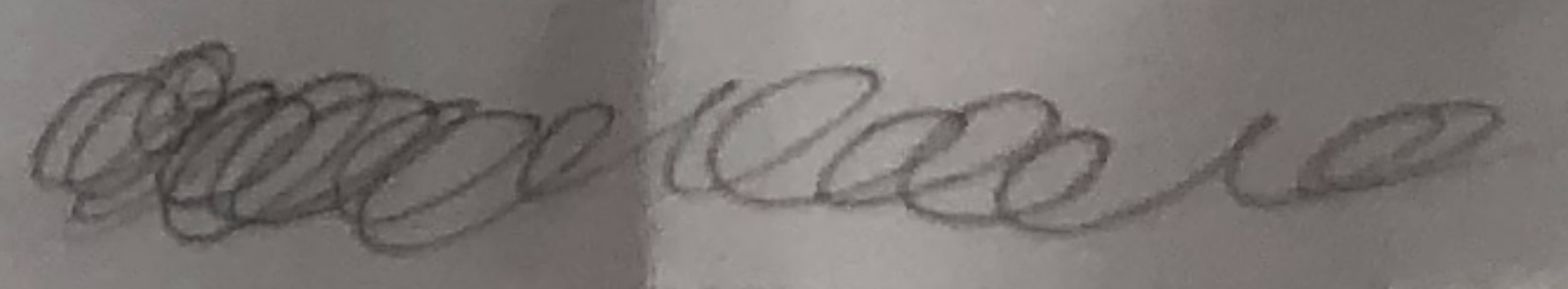
$\text{E} + \text{C}^{\#}$ foot

Low C repeat

open D

$\text{X}^{\#}$

FLZ



$\text{L}^{\#}$

$\text{C}^{\#}$

$\text{F}^{\#}$

norm $\text{C}^{\#}$ lip norm $\text{E}^{\#}$ norm-lip $\text{C}^{\#}$ lip

E $\text{B}^{\#}$ lip $\text{C}^{\#}$

FLZ

$\text{C}^{\#} - \text{D}^{\#}$

$\text{G} + \text{F}$ multi (trem)

(thin 13)

F (kill ring)

FLZ

$\text{G} + \text{T}_1, \text{T}_2$

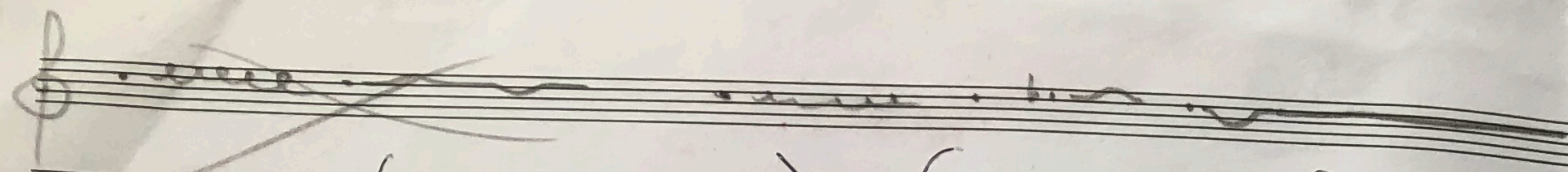
FLZ

3:22 Figure 4s at

$\text{C}^{\#}$ multi

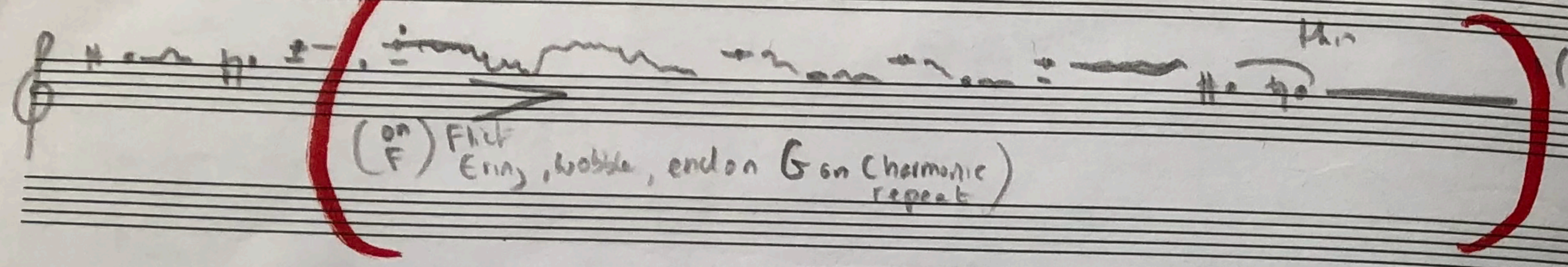
$\text{C}^{\#}$ multi

$\text{E}^{\#}$ $\text{D}^{\#}$

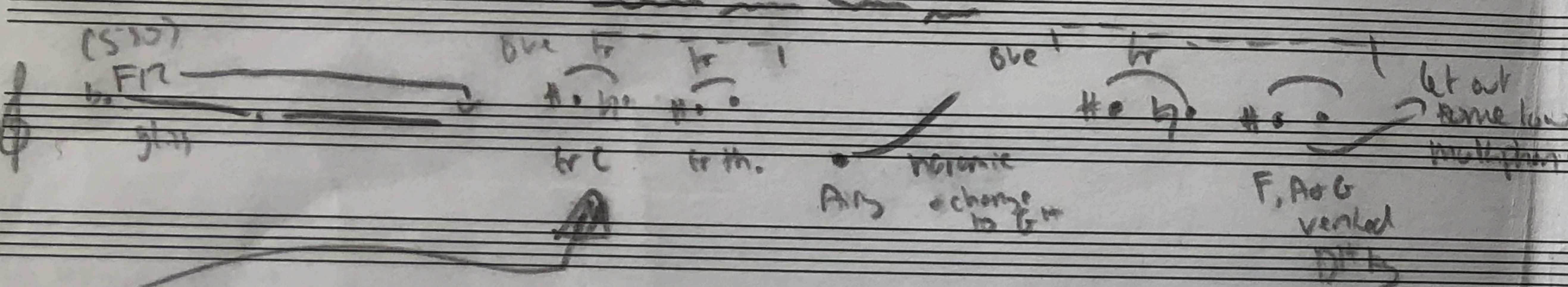
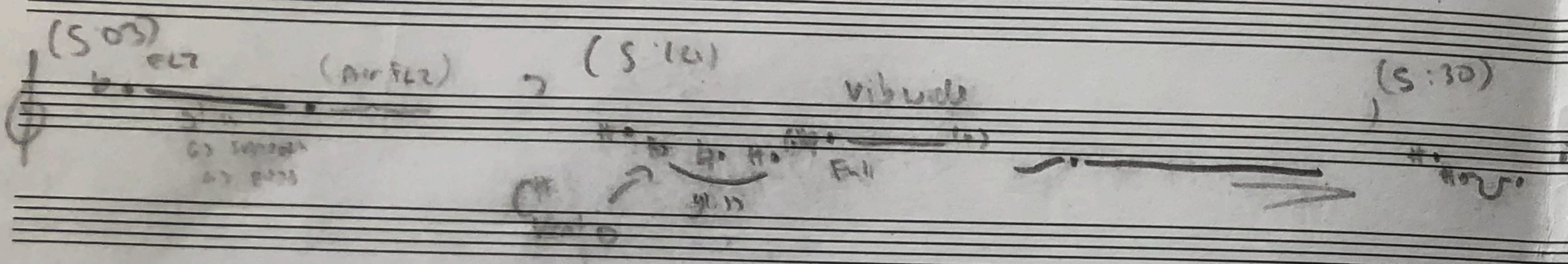


(C3 + G# trill LM 34) + (F + G# + B#) → (E)

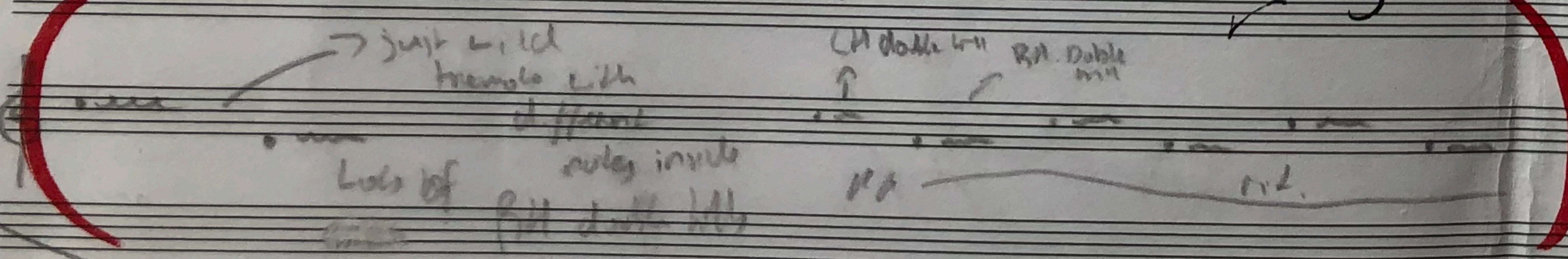
trills - kura



(on F) Flick Em, wobble, end on G on Chromatic repeat

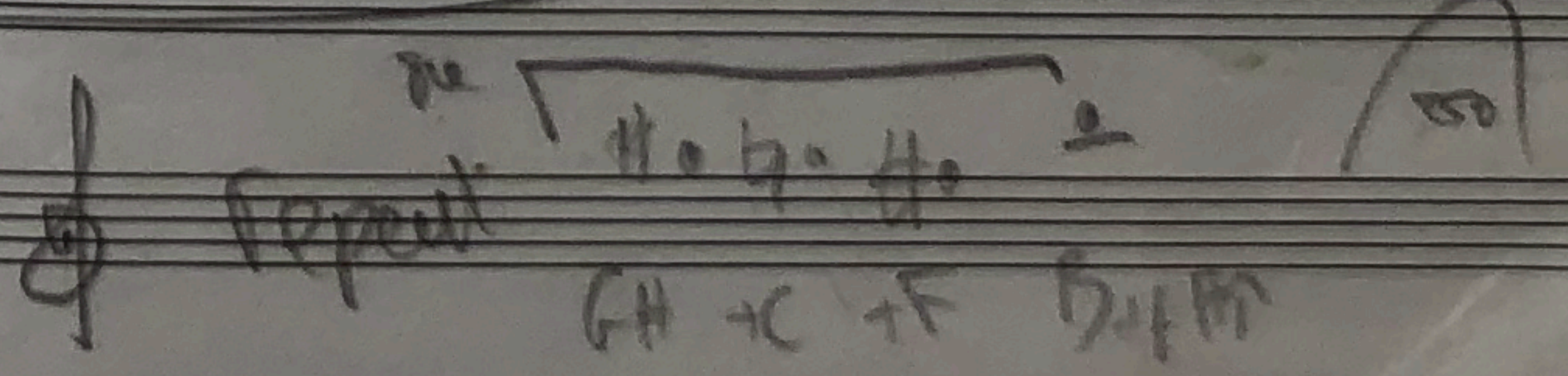
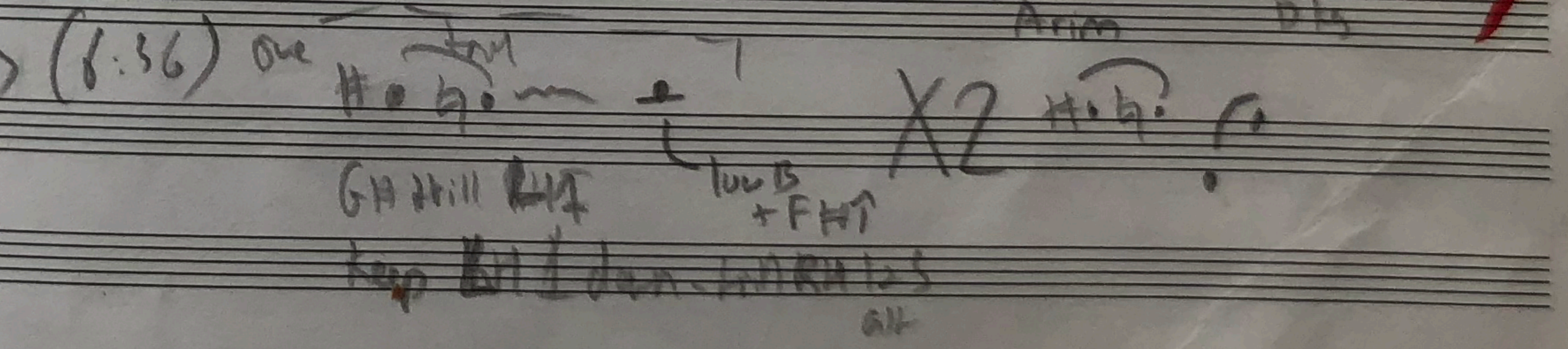
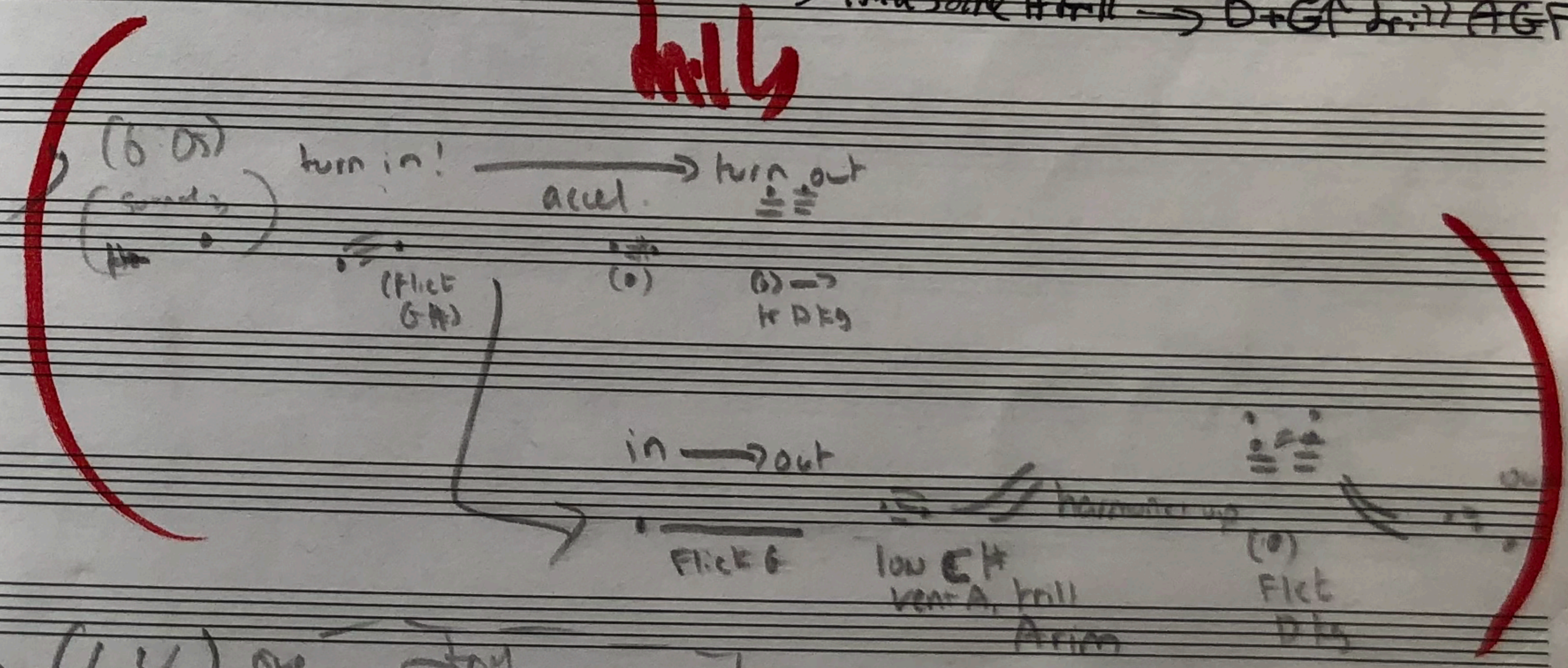
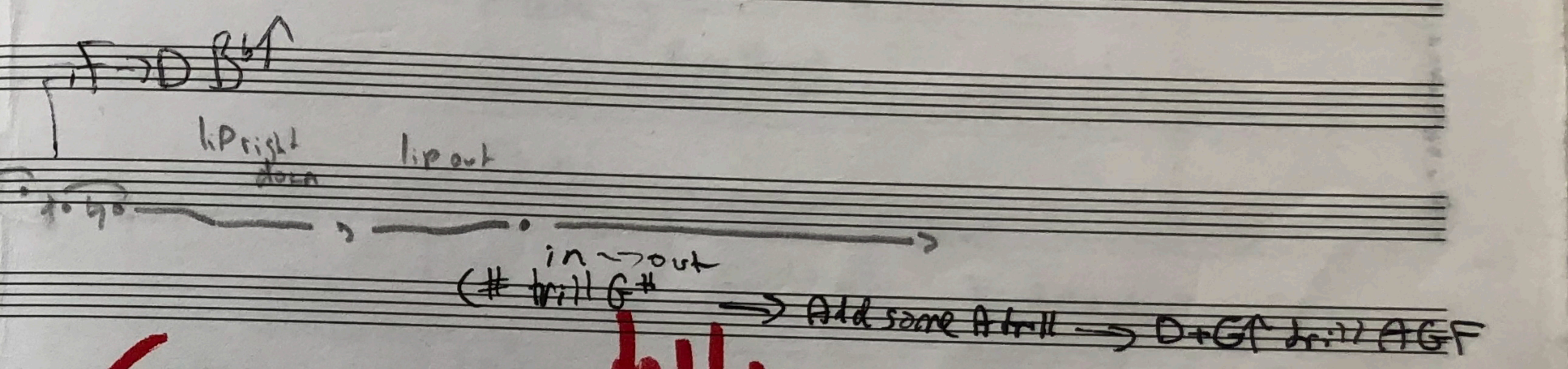
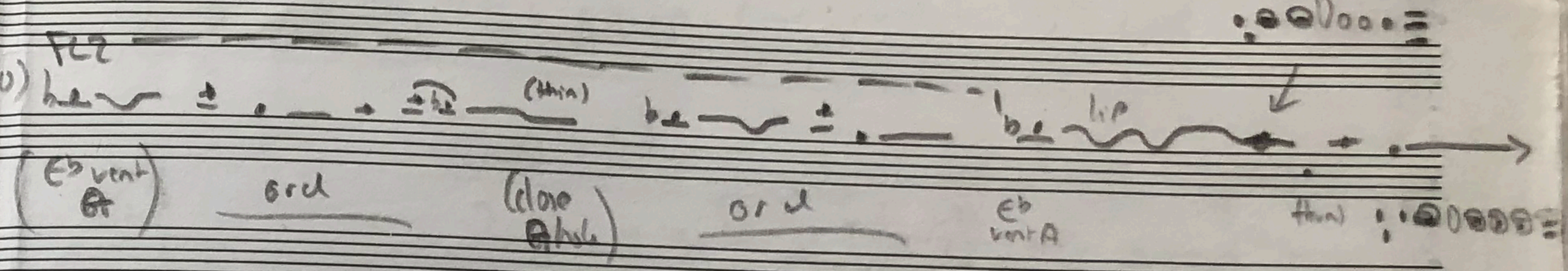
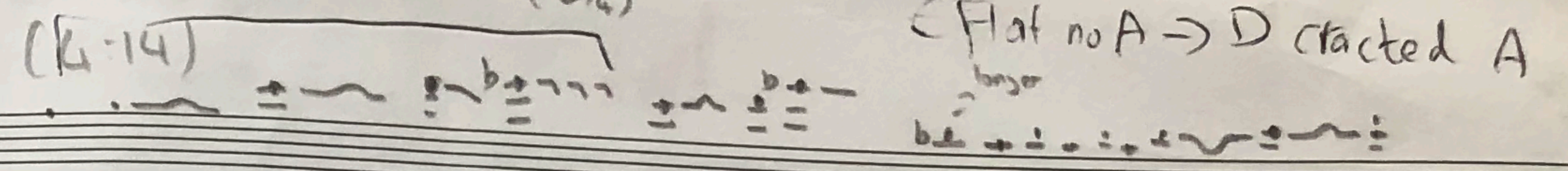


trills Low G open G# trill LM + RM wildly.



Just wild tremolo with d/f hand
Lots of notes inside
LM double hit
RM double hit

G + C# trill + I, I2 (b/c)



Tsuru no Sugomori

page 3

C/F multi → C trill G ↑
D # # # C # #
G # E
Redo

(6:50) Turt T2
D/C multiphonic
open
Serrano trill
G ↑

turned in (7:32)
D2 + G ↑ + F # ↑ - trill G ring → D ↓
lip slurs
(let out some inner part)
FLZ
Eb vent A
1st F no thumb
C # # # T1
middle D vent
G + F # # trill E

(7:07) F no thumb G = open G
Trill by trill (thin)
D vent A
Eb vent
Low B vent D
LOW C # # # down
vent A
RH → DA

(8:57)
tCHP - CH + T2
+ T2 T1
lip
D vent
lip C no thumb
B vent
D vent A
FLZ
Eb vent AG + G
vent F (close A)
Eb vent G ↑
(close G)

(7:09) trill
D G G D
G ↑
trill G ↑
same
lipped down F # # ↑

(7:53) F no thumb
T1 C # # # T1
- T2
C # # # T1
low C = G ↑
low → F no thumb

(8:21) C no thumb
lip all
T1 - trill - T1 + T1
(Mira. Fi)

lipped down G ↑
FLZ
Eb vent AG + G
vent F (close A)
Eb vent G ↑
(close G)